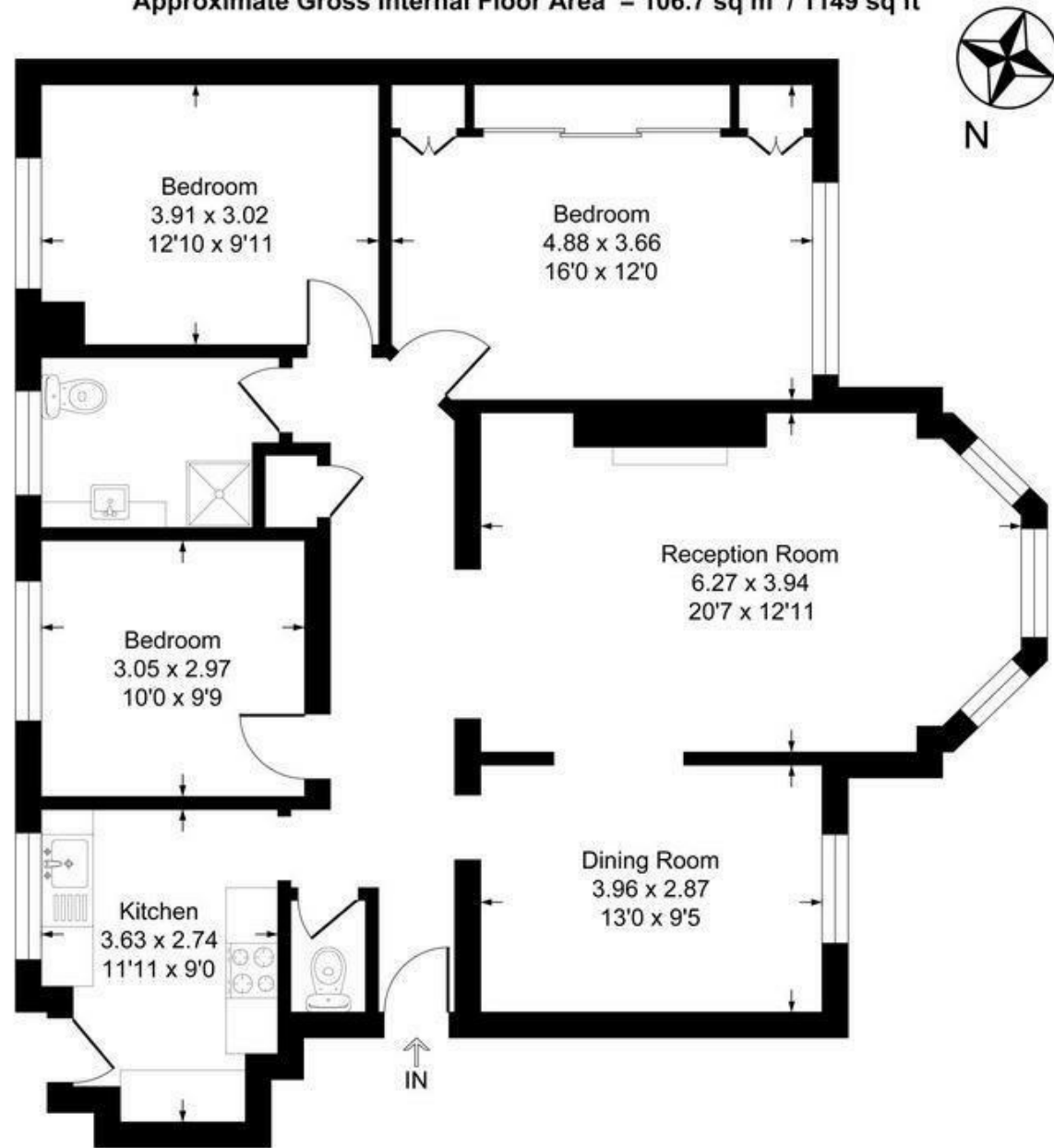


## Highlands Heath SW15

Approximate Gross Internal Floor Area = 106.7 sq m / 1149 sq ft



### Second Floor

Illustration for identification purposes only, measurements are approximate, not to scale.  
Produced By Esjay Property Marketing

## Highlands Heath, London, SW15

An extremely light & spacious apartment positioned on the second floor of this prestigious 1930's built mansion block development. The principle rooms have superb views over the the communal grounds. Three bedrooms are complemented by a large double reception room with separate dining area, a generous hallway, family bathroom and a separate W.C.

Highlands Heath is nestled within an exclusive enclave in the middle of Putney Heath alongside a cricket pitch and a popular pub/restaurant. The area has a village like feel whilst also offering its residents easy access to the superb amenities of both Putney & Wimbledon Village. Residents also enjoy the benefit of off street parking, attractive communal gardens, two private tennis courts and a squash court.

The property is presented chain free.



- 1149 SQ FT
- THREE BEDROOMS
- SEPARATE W.C
- SHARE OF FREEHOLD
- TENNIS & SQUASH COURTS
- DOUBLE RECEPTION ROOM
- FAMILY BATHROOM
- MODERN FITTED KITCHEN
- OFF STREET PARKING
- LIFT

Guide Price

£700,000

Available



DISCLAIMER•These particulars are intended to give a fair and substantially correct overall description for the guidance of intending purchasers and do not constitute an offer or part of a contract. Prospective purchasers and/or lessees ought to seek their own professional advice.

•All descriptions, dimensions, areas, references to condition and necessary permissions for use and occupation and other details are given in good faith and are believed to be correct, but any intending purchasers should not rely on them as statements or representations of fact, but must satisfy themselves by inspection or otherwise as to the correctness of each of them.  
•All measurements are approximate.

